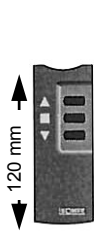


Powered Blinds– Infra Red Remote Control – Technical Sheet 18

Infra-Red Devices

Hand-Held Transmitters

IRT 103



Single Channel

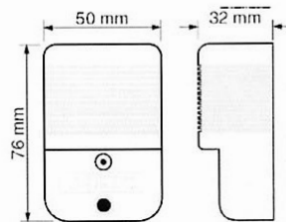
IRT 803



Multi-Channel

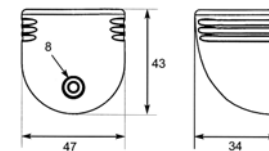
Receiver

IRS 300



Sensor

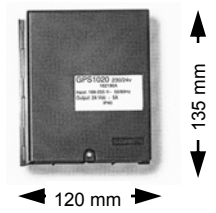
IR 3



For use with GPS 1020

Receiver / Power Supply Unit (PSU)

GPS 1020



Install Design Points

- Sensors must be mounted where they are 'visible' to the remote control
- Combined Receiver / PSU is ideal for 220–240 Volts AC installations
- Single channel remote is easy to operate
- Multi-Channel remote is ideal for multiple blinds and groups
- Multi-Channel remote allows programming of tilt speed and intermediate stops

Options

- Single or 8-channel hand-held remote control
- Blinds can be grouped together on one channel
- Channels can be grouped together; 1-4, 5-8 and 1-8
- Variable speed tilting control available for Venetian blinds
- Combined Receiver/Power supply option for mains power applications

How to Order

- To order use Custom Order Form for relevant product
- Contact Oceanair to discuss complex requirements

Technical Specification

- Devices operate in Infra-Red spectrum
- Infra-Red wireless transmitters powered by two AAA batteries
- Nominal operating voltage of Receiver is 24 Volts DC; Min 20 Max 35 Volts DC
- IRS 300 can switch up to three blinds
- Receiver / PSU GPS 1020 can power and switch up to seven blinds at one time
- Receivers can work in tandem with hard wired switches
- Check Compatibility Tables for additional information

Oceanair Marine Limited Chichester PO20 0AY England

Tel +44 (0)1243 606909 Fax +44 (0)1243 608300 www.oceanair.co.uk E-mail TechSupport@oceanair.co.uk