

Powered Concealed SKYscreen

Installation

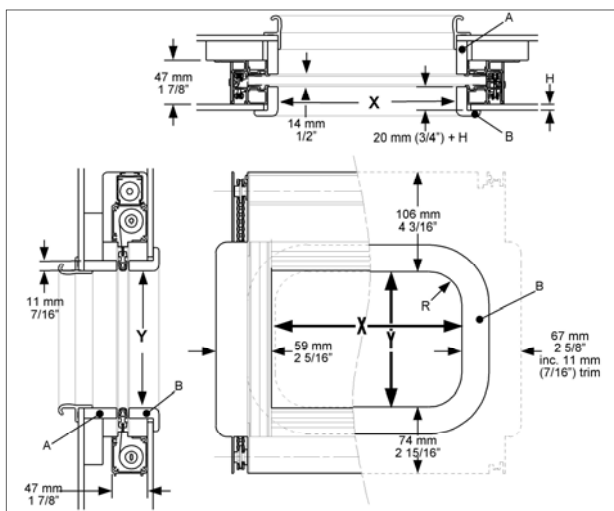
- Open box and ensure that there is no transit damage
- Make sure there is a copy of the Owner's Manual with the unit
- The unit is preassembled and requires no further assembly
- **This unit must be installed horizontally and with flange face at top. Failure to do this will cause the unit to fail**
- When mounting it is best to fix down on rubber gasket for maximum sound insulation.
- The unit is fixed into the boat using the side flanges only (Face A) – drill the fixing holes you require to suit the location of fixing pads on the underside of the deck
- Fasten up the Powered Concealed SKYscreen frame around the upper trim
- The side rail has a lip to set the upper trim in position - this upper trim may be fixed to the side rail vertical face from behind if the trim is wooden otherwise it may be held in place by the hatch frame spigot
- **The unit must not be distorted in installation, twist and racking will jamb the cross bars**
- The unit must be test run at this stage to ensure the unit is operating correctly
- Ensure the upper and lower trim edges are square, level and are the correct heights
- Finish the headlining and fasten up to the lower flange of the side rail (Face B) using Velcro or fixings – use a packer for height adjustment if necessary
- Put up the lower trim fix as required.
- **IMPORTANT: Powered Concealed SKYscreen is an electronic mechanical item and as such must be installed to allow access in the event of malfunction / servicing.**

Electrical Installation

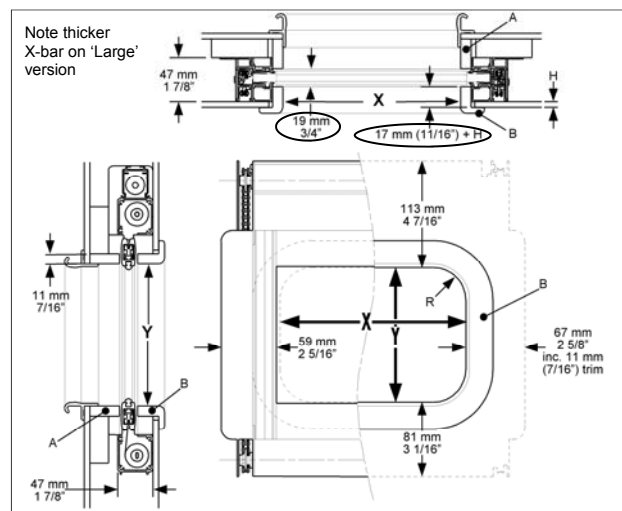
See attached circuit diagram for 3-way switch. Other requirements on request.

Mounting Tips

- Ensuring wiring to the unit allows for disconnection prior to de-mounting for maintenance.
- There is no setting up required once powered up with a reverse polarity three-position rocker switch. The unit will work without adjustment
- The fabric is delicate. Keep dirt out of the side channels. Keep clean when building the boat.



Powered Concealed SKYscreen – Standard



Powered Concealed SKYscreen – Large (where the X or Y dimension is over 700mm)

Oceanair Marine Limited Chichester PO20 0AY England

t +44 (0)1243 606909 f +44 (0)1243 603800 www.oceanair.co.uk e TechSupport@oceanair.co.uk

Ordering

Please use the Custom Order Form for all orders and refer to drawing on Technical Sheet 25

To determine the size of your unit you should consider the following points when completing the Custom Order Form

- Work from the inside face of the trim to determine the X and Y dimensions
- The X and Y dimensions and trim thickness. 'T' will be used for manufacture – please note our manufacturing tolerance is +/- 1mm (1/16")

Operation

1. Hardware – three-way rocker switch. No adjustment necessary
2. Remote control—see separate sheet for information.

Care & Maintenance

- Light lubrication of the side runners ensure a smooth operation - a silicon spray is ideal. Never use a grease or oil.
- In the event of either the blind or the screen being damaged either part may be replaced.
- Spare parts diagram available.
- For further information or installation assistance, please contact your local distributor.