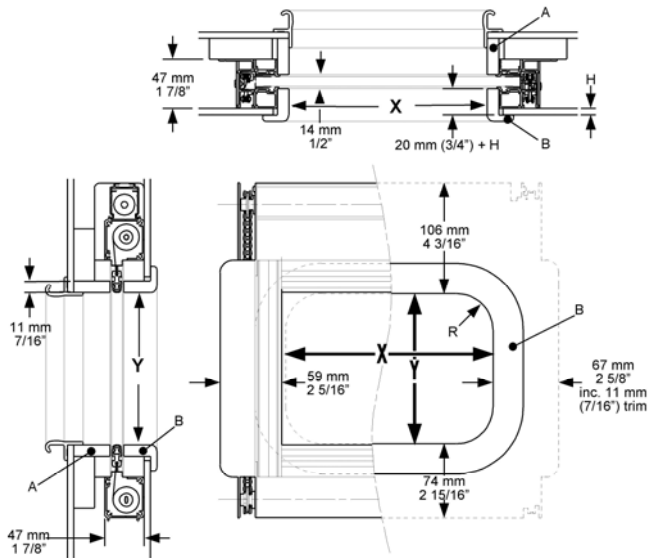


# Powered Concealed SKYscreen

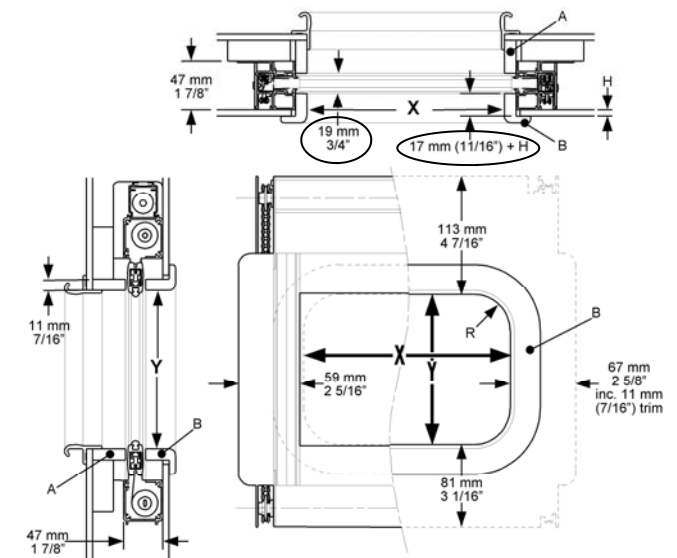
## - Technical Sheet 25

### General Arrangement Drawing

Powered Concealed SKYscreen - Standard



Powered Concealed SKYscreen – Large  
(where X dimension is over 700mm)



Note: Measurements include an 11mm wooden trim. If no trim is required, deduct 11mm from the 67mm side rail width only

### Install Design Points

- No visible design impact on yacht interior
- Blinds and flyscreen emerge from 10mm slot
- Flyscreen brushstrip top and bottom of track
- Side rails designed to support headlining panel and hatch trims
- Compact design for minimal space
- Easy fastening
- All ready to go - just wire up
- Available with liner system if required - see Technical Sheet 11
- Optional manual control by 5 position rocker switch or remote control by infra red or radio systems.

### Sizing

- Any size up to a maximum of 800mm square. Other sizes on referral to Oceanair (Minimum 200mm wide). Blinds that have a X dimension of over 700mm will require the larger cross bar – see 'Large' general arrangement drawing above.

### Options

- Infra red remote control operating system available. Wiring diagrams available for different operating groups
- Alternative fabrics available, refer to Oceanair.
- If you require the cross bar join to be out of sight, increase dimension 'Y' by 50mm
- Side rail flanges may be cut off reducing the width by 15mm per side, at extra cost.

### How to Order

- See custom order form. CAD drawings available.

### Technical Specification

- Plastic chain drive
- Motor 24V DC with safety stall cut out. CE approved
- Minimum running current 500 MA
- Maximum running current 650 MA
- Fabric: blackout
- Flyscreen: glass fibre mesh UPVC coated white
- All components marinised
- Manufacturing tolerance +/- 1mm

Oceanair Marine Limited Chichester PO20 0AY England  
t +44 (0)1243 606909 f +44 (0)1243 608300 www.oceanair.co.uk e TechSupport@oceanair.co.uk