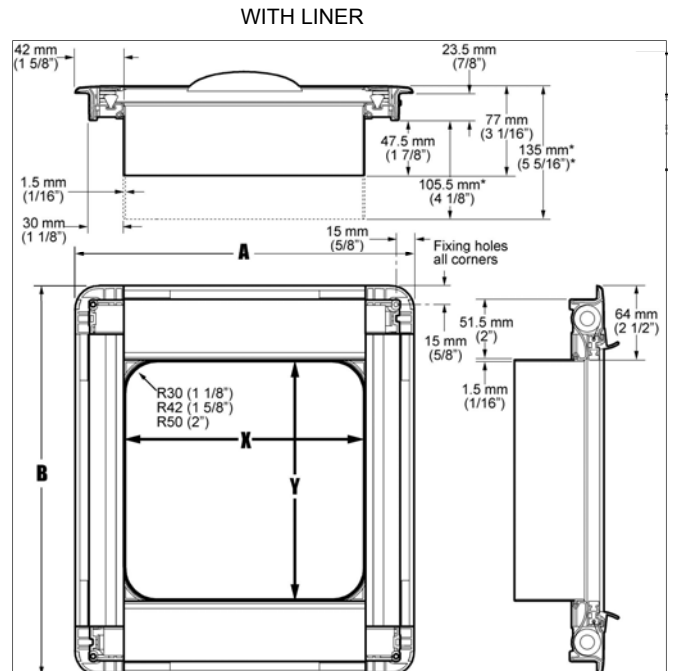
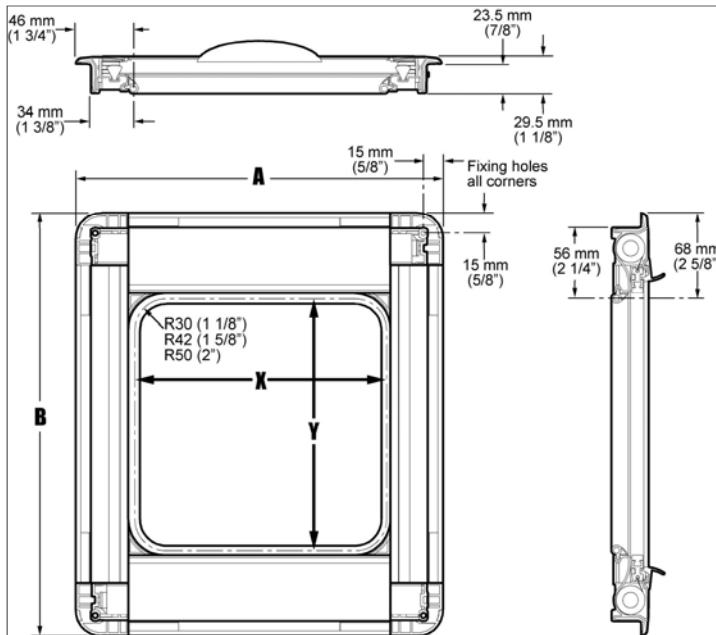


Recessed SKYscreen (Mk 5) - Technical Sheet 28

General Arrangement Drawing

Note: All dimensions common to all sizes.



Install Design Points

- Area must be flat around SKYscreen mounting area
- Depth of recess must be accurately set at 23.5mm ($15/16$ "
- Unit must be accurately matched to hatch if fitting PVC liner both dimensionally and radius.
- Maximum gap filling height of PVC liner with SKYscreen is 69mm ($2\frac{3}{4}$ "
- PVC liner available in white only

Custom

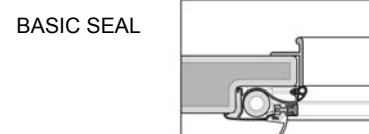
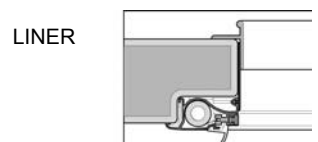
- Custom sizes and fabrics available on application
- Drops greater than 900mm ($35\frac{3}{8}$ "
- Blinds over 750mm wide have two handles

How to Order

- To order refer XY measurements to aperture of hatch. See standard table of sizes cross referenced to all major brands or order custom through custom order form
- When ordering state whether you want a PVC trim version or basic seal – see separate form.
- Choose frame colour – White or Beige

Technical Specification

- Aluminium frame, with polyester powder coated with pretreatment
- Colour White is RAL No 9016 and Beige RAL No 9001
- Stainless steel recoil springs
- Glass fibre PVC coated flyscreen mesh – white
- Standard Solar Shield off-white polyester blackout water repellent fabric
- White silicone seal – Ultra-Violet stabilised
- PVCliner Ultraviolet Stabilised
- Brush strip fitted as standard



Oceanair Marine Limited Chichester PO20 0AY England
t +44 (0)1243 606909 f +44 (0)1243 608300 www.oceanair.co.uk e TechSupport@oceanair.co.uk