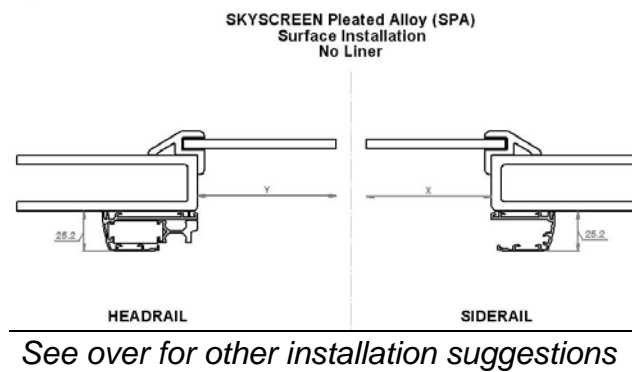


SKYSCREEN Pleated Alloy - Technical Sheet



Description

- A combined blackout and flyscreen designed primarily for hatches.

Main Points

- Non-recoil, stop anywhere cross bars
- Simple to install with self-adhesive pads in the corners to hold the blind in place while fitting
- Requires only 4 screws
- Optional matching liner for sizes up to 507mm [20"] square
- Blackout only and flyscreen only versions available for longer blinds
- Available with white or beige hardware
- Off-white blackout and dark blue/black flyscreen
- Fully marinised components and system
- Fits all Oceanair standard trims (round, D-shaped and trapezoidal)
- Available with or without R42 inserts/radius pieces.

Technical Specification

- 14 mm pleated blackout and flyscreen - polyester and water repellent.
- Aluminium extrusion powder coated standard white (RAL9016) or standard beige (RAL9001).
- Matching corner mouldings in acetal.
- Centre Cord Specification

Dimension		Centre Cords	
X	A	Blackout	Flyscreen
< 439mm [17 9/32"]	< 519mm [20 7/8"]	0	0
< 507mm [20"]	< 587mm [23 1/8"]	0	1
< 800mm [34 1/2"]	< 880mm [34 1/2"]	1	1
> 800mm [34 1/2"]	> 880mm [34 1/2"]	2	2

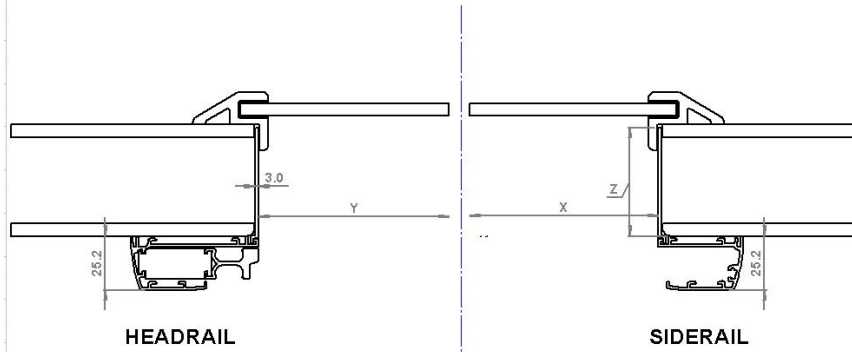
- Blinds with a Y dimension over 900mm [35 1/2"] will have an increased stack height.
- Units with a Y over 1200mm [47"] will require an additional fixing in the side rails.
- Units with a Y over 1600mm [63"] will have to be meet in the middle blinds (BOM or FOM) up to a maximum of 3200mm [126"].
- All blinds have a R42, other radii are available for blinds without liners but there will be a minimum order and an extended lead time.
- 28mm [1 1/8"], 35mm [1 3/8"], 42mm [1 21/32"], 50mm [2"], 80mm [3 5/16"] Liners can be cut down by the customer, but Oceanair can supply pre-cut liners at other heights with a maximum of 80mm [3 5/16"].
- The standard format is Blackout and Flyscreen (BF), Blackout Only Full Travel (BOF) and Flyscreen Only Full Travel (FOF) are also available. For Blackout Only Meet in the Middle (BOM) or Flyscreen Only Meet in the Middle (FOM) the maximum drop can be doubled.

Related Documents

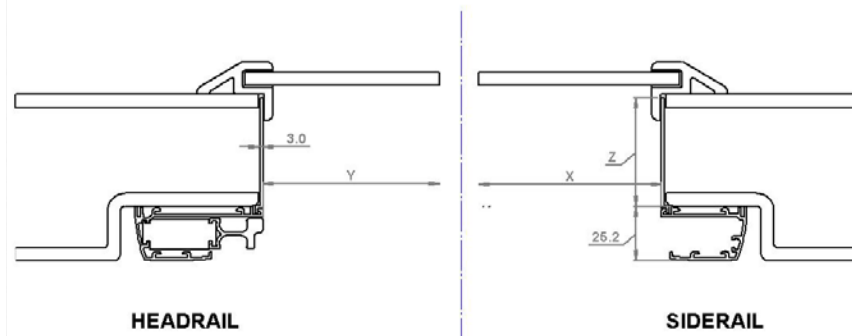
- SKYSCREEN Pleated Alloy Custom Order Form
- SKYSCREEN Standard Trims Technical Sheet and Custom Order Form

SKYSCREEN Pleated Alloy - **Technical Sheet**

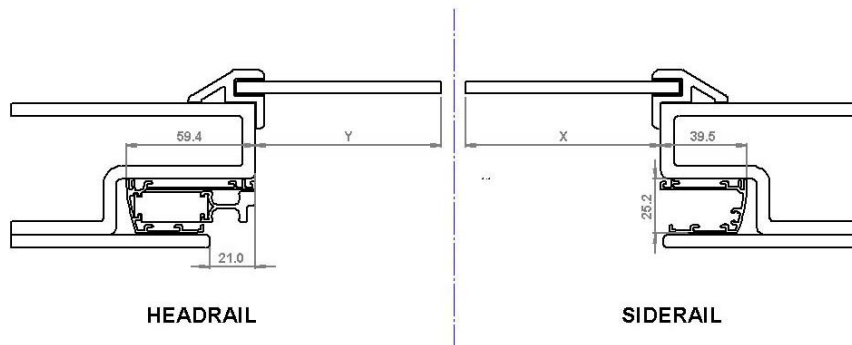
SKYSCREEN Pleated Alloy (SPAL)
Surface Installation
With Liner



SKYSCREEN Pleated Alloy (SPAL)
Recessed Installation
With Liner



SKYSCREEN Pleated Alloy (SPA)
Concealed Installation
No Liner



SKYSCREEN Pleated Alloy (SPAL)
Concealed Installation
With Liner

