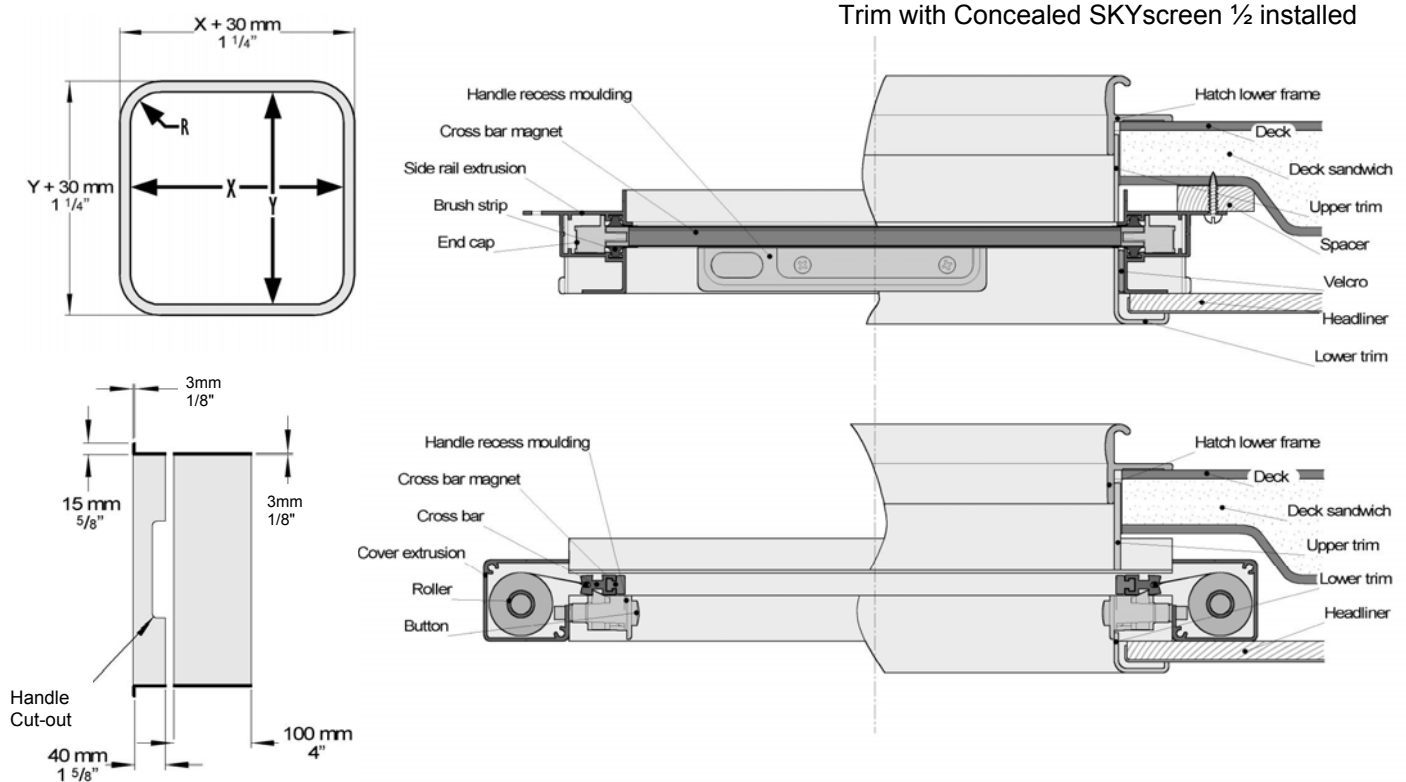


Concealed SKYscreen Trims

Aluminium - Technical Sheet 12

Aluminium trims are a system of upper and lower parts that are matched to our Concealed SKYscreen and can be supplied as a matching set or supplied loose

General Arrangement Drawing



Install Design Points

- Maximum depth of deck for system complete with SKYscreen 200mm (7⁷/₈"")
- Trim wall thickness is 3mm (1¹/₈"")
- Lower trim supplied with Concealed SKYscreen handle cut outs and trim height is set to minimum necessary to provide a good recess

Sizes

- Maximum dimensions overall 800/800mm (31¹/₂"/31¹/₂"")
- Standard upper trim height 100mm (3⁷/₈""), maximum height 150mm (5⁷/₈"")
- Radius options from 30mm (1¹/₈"") to 100mm (3⁷/₈"") are available
- Round option available to suit main hatch brands
- Three choices of finish - Beige, White and Mill (unpainted)

How to Order

- Please complete Custom Order Form
- Also see Concealed SKYscreen which is needed at the same time
- Trims may be ordered as a set or as separate items - e.g., lower or upper frame only. Either trim may be used with corresponding wood trim parts.

Technical Specification

- Paint specification and colour - Polyester powder coated with pre-treatment. Colour White is RAL No 9016, and Beige RAL No 9001
- All tolerances and sizes are taken from the inside face. Trims manufactured to a tolerance of +/-1mm

Oceanair Marine Limited Chichester PO20 0AY England

Tele +44 (0)1243 606909 Fax +44 (0)1243 608300 www.oceanair.co.uk E-mail TechSupport@oceanair.co.uk