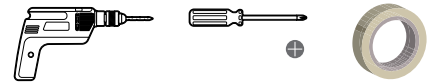


CABINSHADE INSTALLATION INSTRUCTIONS

You will need

Power drill, drill bit size $\varnothing 2\text{mm}$ (1/16"), cross headed screwdriver, double-sided tape and masking tape.

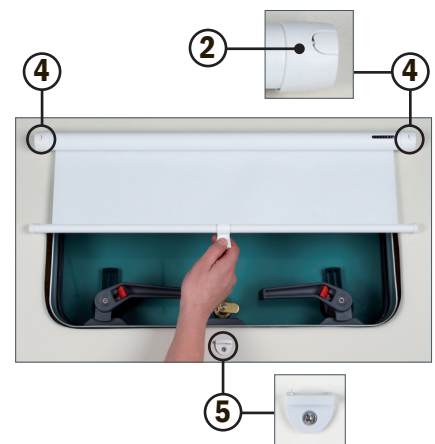


Mounting instructions

- ① Ensure that the thickness of the boat structure at the proposed mounting position is deep enough to prevent the fixing screws from breaking through. If necessary, use shorter fixing screws than those supplied. Use masking tape on the drill bit as a depth guide to avoid drilling too deep.

Face fix

- ② Prise open the end bracket fixing screw covers with a fingernail or small blunt tool.
- ③ Use double-sided tape to position the blind before drilling. Ensure that the blind is positioned parallel with the portlight/window. Drill fixing holes into the boat structure to match the two fixing holes pre-drilled in the end brackets.
- ④ Fix the blind in position by screwing through the two end bracket holes.
- ⑤ Extend the blind to the required position to cover the portlight. Mark and drill a fixing hole into the boat structure and fix the mini grip handle catch with the shorter screw provided.
- ⑥ Stopper pegs are also supplied to hold the blind down halfway if desired.



Care and maintenance

- The spring systems do not require servicing.
- It is possible to adjust the spring tension of the blind to alter the recoil effect. Remove the small end bracket retaining screws at the left hand end, taking care to keep the end bracket on the tube, rotate the end bracket to increase (clockwise) or decrease (counter-clockwise) the spring tension. When satisfactory tension is achieved replace the retaining screws. Be careful not to over tension as the spring may be damaged.
- If the blind gets wet, pull out the blind and leave it to dry naturally. Small marks can be removed by gently rubbing with an India rubber eraser. The fabric has a water repellent coating.
- Most Oceanair component parts may be replaced if damaged. To identify the parts, please reference the product code found on the label on the back of the roller.

For further information or installation assistance, please contact your local Oceanair Distributor:
www.oceanair.co.uk/distributors.

Oceanair Marine (UK): +44 (0)1243 606 909 techsupport@oceanair.co.uk
Oceanair Marine (US): +1 802 362 5258 info@oceanairmarine.com